



Simple, four step kitchen design pack

PRINT PACKAGE

The future of kitchen design

3D Kitchen Designs offer a unique kitchen design service based on your specific kitchen dimensions and personal requirements. And best of all, you don't even have to leave the comfort of your home.

Perhaps the greatest benefit of using our online design solution is that YOU design the kitchen YOU want.

Based on the measurements you submit to us via our easy-to-use website or four step print pack, we will obtain real quotes from independent cabinet makers. These quotes will be based on the same design and finishes so you can easily compare prices.

Saving you money

At 3D Kitchen Designs we offer you an affordable, upfront kitchen design fee with no hidden costs.

The misconception when people start the process of purchasing a new kitchen is that the design service is FREE! The design fee is simply incorporated into the cost and can add up.

How does it work?

Via our simple interactive website or downloadable print pack you tell us the dimensions of your kitchen, your appliance requirements and kitchen characteristics.

All you will need is a measuring tape and approximately 10 minutes of your time.

After receiving your measurements we will send you a mock-up plan of your wall dimensions via email within 24 hours so you can double check their correctness. Once approved we will create a custom 3D kitchen design for you within 72 hours. We will also obtain three comparative quotes from reputable kitchen suppliers and installers.

Note: All the measurements you supply will be checked by the kitchen company before manufacturing commences.

All you have to do is take our 3D plans & quote to the kitchen company of your choice to arrange a convenient time for installation. It's that simple!

Get started >>

www.3dkitchendesigns.com.au



Kitchen designs.

How to measure your kitchen

Step 1

Print the graph paper over the page. It does not have to be in colour.

When measuring any kitchen what our design team need to know is maximum wall space, area in which we can place cabinets. You can start on any wall and work your way around clockwise. In our example diagram, over the page, we have started with Wall 1.

Step 2

Wall 1 measure from left to right our maximum wall space in this example is 3815mm

Step 3

Wall 2 measuring from left to right maximum wall space from corner of the wall to the start of your window architrave in this example wall size is 440mm.

Step 4

Window size, again measuring left to right total size of window including architraves in this example our window is 2210mm long.

Step 5

Wall 3 measuring again from left to right maximum wall space from edge of architrave to corner of wall in this example total wall space is 1150mm.

Step 6

To check your measurement of steps 2, 3, & 4 measure the overall size of this wall shown in example as 3800mm. Add up wall 2 (440mm) + window (2210mm) + wall 3 (1150mm). This should equal 3800mm - your total wall size.

Step 7

Wall 4 - measure from left to right maximum wall space, in example total wall is 3815mm

Step 8

Wall 5 measuring right to left again from corner of wall to edge of door architrave shown in example as 2320mm

Step 9

Door size this is the same process as measuring a window working from left to right measure total door size including architraves in this example our door is 875mm

Step 10

Wall 6 measuring left to right maximum wall space from edge of door architrave to corner of wall in this example total wall space is 605mm

Step 11

Repeat the same process as step 5 to check your measurements

Step 12

Measuring for your plumbing waste pipe & electrical or gas point. As shown in example. Plumbing 1545mm from corner of wall to waste pipe. Electrical 1720mm from corner of wall to electrical wire or gas pipe.

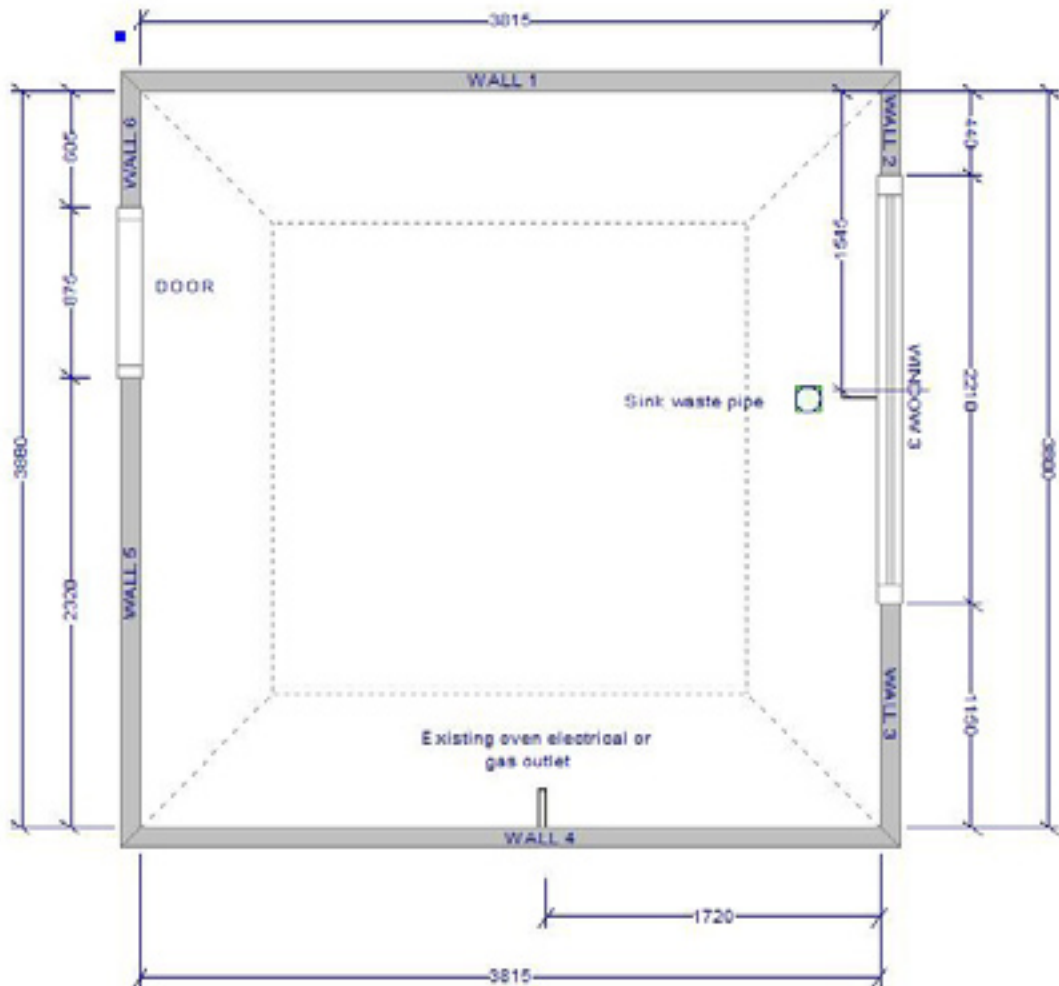
NOTE! If it hard to see the exact position of these outlets you can measure to the centre of your oven or sink.

THIS PROCESS WILL WORK FOR ANY KITCHEN SIZE & SHAPE.

If you make a mistake simply print the graph paper again and start over.

www.3dkitchendesigns.com.au

Measuring Guide





Kitchen designs.



Print & send this page
to 3D Kitchen Designs

Print this page and draw your plan here

When drawing your walls make each square on the grid paper 100mm x 100mm

A large rectangular area filled with a light gray grid. The grid consists of small squares, each representing 100mm x 100mm. The grid is intended for drawing a kitchen plan.

Your Name:

Property Address:

Contact Number:

www.3dkitchendesigns.com.au



Print & send this page to 3D Kitchen Designs

Design Preferences

Please tell us what design preferences you will require so we can incorporate them into your 3D kitchen design.

We suggest you refer to our design examples page overleaf for examples of the appliance and design preference options listed below.

Will you require glass doors? Yes No

Will you require an appliance / roller shutter cabinet? Yes No

Will you require an island bench? Yes No

Note: your kitchen must be a minimum of 4600mm wide x 2600mm deep for an island bench to fit.

Do you want a stone waterfall end? Yes No

Island benchtop corner finish: Double pencil

Mitres apron

Benchtop thickness

20mm

40mm

60mm

70mm

80mm

Wall Cabinet Finishing Height

2200mm from floor level

2400mm from floor level

2200mm with bulkhead

Finished at ceiling height

Other appliance requirements

Please write any additional appliance or design preference details you would like to inform our design team about in the spaces below.

.....
.....
.....
.....
.....
.....
.....
.....
.....
.....
.....
.....
.....
.....
.....
.....



Kitchen designs.



Print & send this page
to 3D Kitchen Designs

Design examples



www.3dkitchendesigns.com.au



Print & send this page
to 3D Kitchen Designs

Package options

To view sample plans for each package please visit our website - www.3dkitchendesigns.com.au/packages.htm.

(select)

SILVER PACKAGE **FREE** for the first 100 design orders

For clients that has a good understanding of how they would like there kitchen to be designed & contain i.e. cabinet's appliances and colour.

Package features

- Black and white elevation plans
- Black and white plan drawing with measurements & perspective view of kitchen design
- 3 changes to first draft drawing

Additional changes (if required) - \$35 per change (incl. GST).

GOLD PACKAGE **Cost \$45 including GST**

For clients that have some ideas about what there trying to achieve with materials & design of there kitchen. But to get things exactly right may need to make a couple of extra changes.

Package features

- Black and white elevation plans
- Black and white plan drawing with measurements & perspective view of kitchen design
- 6 changes to first draft drawings

Additional changes (if required) - \$35 per change (incl. GST).

PLATINUM PACKAGE **Cost \$80 including GST**

This is your first time purchasing a kitchen & would like to completely change what is currently there, you may even need to remove walls to create a bigger space. Colour is something you would like to see as this will help give you a better understanding of how the end product will look.

Package features

- Full colour plans
- Elevations
- Plan drawing with measurements & perspective view of kitchen design
- 8 changes to first draft drawings

Additional changes (if required) - \$35 per change (incl. GST).



Print & send this page
to 3D Kitchen Designs

Do you require kitchen quotes?

As part of our service we can arrange up to three independant quotes to manufacture and install your kitchen for you.

You are under no obligation to accept these quotes.

Complete the form below if you would like us to obtain quotes for you.

Number of quotes required

- 1 quote
- 2 quotes
- 3 quotes

Door material

- Laminate
- Polyurethane
- Vinyl gloss
- Timber veneer
- Solid timber
- Other

Benchtop material

- Laminate
- Granite
- Caesar stone
- Corian
- Other

Splashbacks Glass Tile



Kitchen designs.



Print & send this page to 3D Kitchen Designs

Your Contact Details

Name:

Phone (BH):

Phone (AH):

Postal address:

Email:

Payment Options

We offer three convenient payment options.

CREDIT CARD

Visa Mastercard Amex

Credit card number:

3 digit security code: Amex 4 digit security code:

Cardholders name:

Expiry date: Signature:

DIRECT DEPOSIT

I will be making a payment via direct deposit.

Account name: 3D Kitchen Designs

Account number: 1029 3565

BSB: 062 205

** Type your first initial and surname as the 'payee' so we can apply these funds to you.*

Sending Your Plans

Post

Please post your kitchen plan drawing, photos and other information you think will help our kitchen designers to: PO Box 1757, Warriewood NSW 2102

Scan & Email

designs@3dkitchens.com.au

Fax

(02) 9997 8972

www.3dkitchendesigns.com.au